



Participatory MRV: Preliminary Results from the Social Study

Guillaume Beaudoin, Lina F. Jihadah, Walker DePuy



Outlines

A- INTRODUCTION

1-Research Sites

2- Research Questions

3- Research Design and Methods

B- METHODS AND EXAMPLES OF DATA

1- Conditions

2- Willingness

3- Supporting Organizations

C- SYNTHESIS OF PRELIMINARY FINDINGS

D-CONCLUSION

E- Q & A



A- Introduction

1-Research Sites

2- Research Questions

3- Research Design
and Methods

B- Methods and examples of data

1- Conditions

2- Willingness

3- Supporting
Organizations

C- Preliminary findings

D-Conclusion

Our sites at a glance

1. Papua, Mamberamo Raya

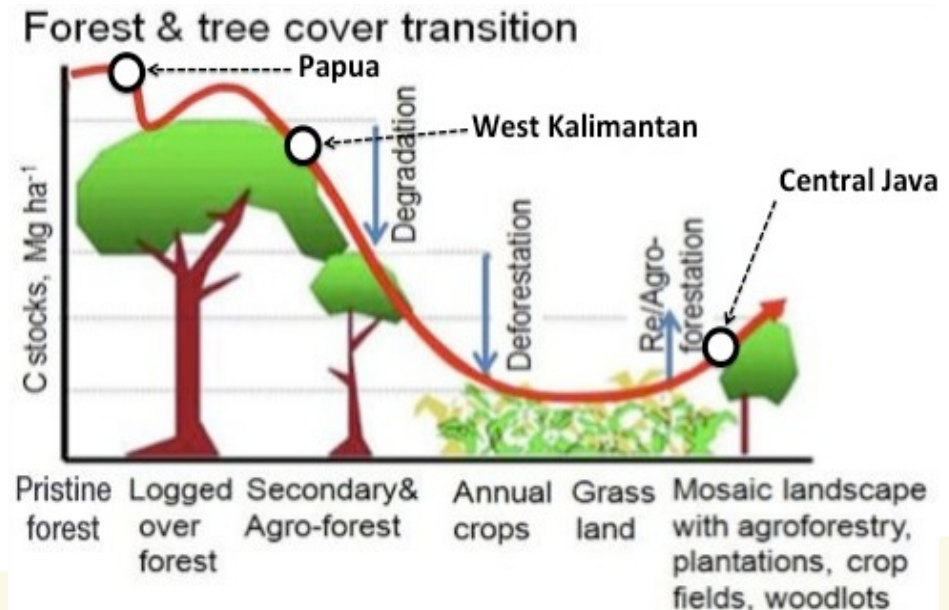
Pristine and secondary forest

2. Kalimantan, Kapuas Hulu

Secondary forest and agro-forest

3. Java, Wonosobo

Agroforestry, crop fields and plantation



Research Questions

A- Introduction

1-Research Sites

2- Research Questions

3- Research Design and Methods

B- Methods and examples of data

1- Conditions

2- Willingness

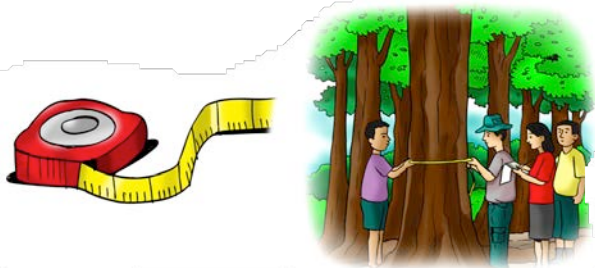
3- Supporting Organizations

C- Preliminary findings

D-Conclusion

- **Main RQ: What do we need to know if PMRV is to be feasible and sustainable?**
- **Sub RQs:**
 - 1- What **conditions** make it possible for local people to conduct PMRV? (*People's availability, people's ability, governance*)
 - 2- What is needed for people to be **willing** to participate in PMRV?
 - 3- What existing **organizations** can support PMRV and what can PMRV learn from current and past organizations?

Measurement



Reporting



Verification



A- Introduction

1- Research Sites

2- Research Questions

**3- Research Design
and Methods**

B- Methods and examples
of data

1- Conditions

2- Willingness

3- Supporting
Organizations

C- Preliminary findings

D- Conclusion

How can we answer our research questions?

Our Methods:

- Focus Group Discussions
- Key Informant Interviews
- Household Surveys
- Participatory mapping



Methods Indicators	RQ 1 - Conditions	RQ 2 - Willingness	RQ 3 – Supporting organization
FGD – Forest management	Dependence on natural resources (NR); land tenure	Drivers of forest change	-
FGD – Seasonal Calendar	Time resource; sources of livelihoods	-	-
FGD – Sociogram	Power relations; village governance	Reporting experience	Village organizations; perceptions of and interactions with organizations
FGD – Drivers of Change	Dependence on natural resources	Drivers of forest change; value of forest services	-
Participatory mapping	Infrastructure facilities; land tenure	-	-
KII – General Information	Infrastructure facilities; dependence on NR; sources of livelihoods	Drivers of forest change	-
KII – Land Tenure	Power relations; land tenure	-	-
KII – Experience Mechanism	-	Reporting experience; value of forest services	Experience mechanism;
Household Survey	Demography; time resource; sources of livelihoods; dependence on natural resources; education	Value of forest services	Village organizations; experience mechanism; perceptions of and interactions with organizations

A- Introduction

- 1- Research Sites
- 2- Research Questions
- 3- Research Design and Methods

B- Methods and examples of data

- 1- Conditions**
- 2- Willingness
- 3- Supporting Organizations

C- Preliminary findings

D- Conclusion

Household Survey

Indicators:

- Village demography
- Sources of household livelihoods
- Relationships with natural resources
- Access to markets and city
- Organizations and social activity membership and motivations for participation
- Trends in natural resources and demographics



Caption: Household survey interview in Bagusa I. Yable – Aug 2013



Seasonal Calendar

Seasonal Calendar – (Men Group)

Men in BAGUSA	January	February	March	April	May	June	July	August	September	October	November	December
Celebration	★ New year	★ Anniversary of the Arrival of Christianity		★ Easter	★ National Work day			★ 17 August Ind. Day				★ Christmas
SEASONS	Hot ☀️	Rainy ☁️		Hot ☀️	Hot ☀️	Hot ☀️	Hot ☀️	Hot ☀️	Hot ☀️	Hot ☀️	Rainy ☁️	Rainy ☁️
FLOODS	☁️	☁️		☀️	☀️	☀️	☀️	☀️	☀️	☀️	☁️	☁️
CULTIVATION ACTIVITIES												
HARVESTING FRUITS												
ANIMAL HUNTING/FISHING												
HANDICRAFT												
COMMUNAL ACTIVITIES												
DISEASES												
MOST BUSY TIME							4	3			2	1
GOOD FOR PARTICIPATORY ACTIVITIES			😊	😊	😊	😊			😊	😊		

- Seasonality of people's different subsistence activities and livelihoods;
- Differences by gender;
- When natural/cultural events occur;

Seasonal Calendar – (Women Group)

Women in BAGUSA	January	February	March	April	May	June	July	August	September	October	November	December
Celebration	★ New year			★ Easter	★ National working day			★ 17 August Ind. Day	★ 13 September			★ Christmas
SEASON	Hot ☀️	Rainy ☁️		Hot ☀️	Hot ☀️	Hot ☀️	Hot ☀️	Hot ☀️	Hot ☀️	Hot ☀️	Rainy ☁️	Rainy ☁️
CULTIVATION ACTIVITIES												
ANIMAL HUNTING												
COMMUNAL ACTIVITIES												
DISEASES												
MOST BUSY TIME							2	2			2	1

- Most/least time available for people to participate in PMRV activities.



A- Introduction

- 1-Research Sites
- 2- Research Questions
- 3- Research design and methods

B- Methods and examples of data

- 1- Conditions**
- 2- Willingness
- 3- Supporting organization

C- Preliminary findings

D-Conclusion

Participatory mapping

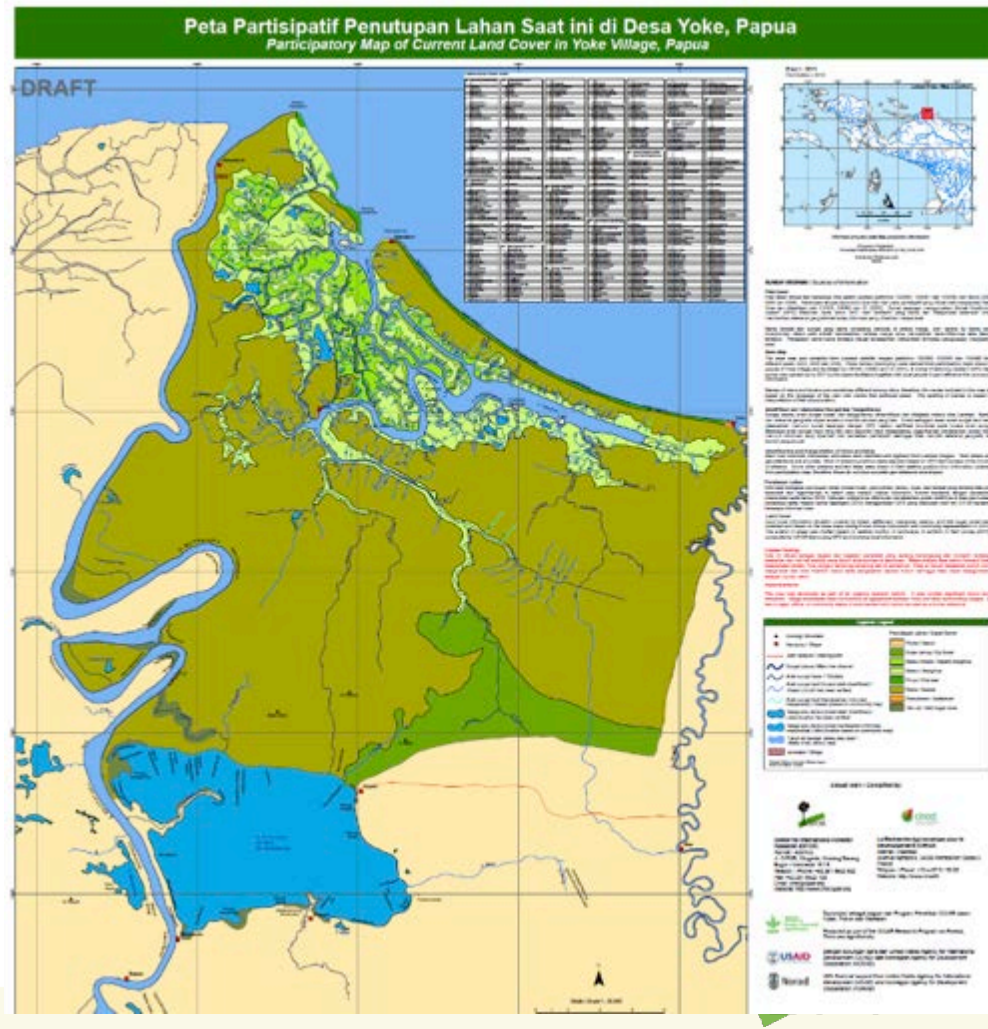
- Present and past land use and land cover can be identified from local people's perceptions.
- Helps identify future trends in land use/cover change trends and potential areas for measurement.
- Can see differences between ground reality, local perceptions, and satellite imagery.



Caption: Participatory mapping in Yoke – M. Padmanaba – Aug. 2013



Participatory mapping



A- Introduction

- 1- Research Sites
- 2- Research Questions
- 3- Research design and methods

B- Methods and examples of data

- 1- Conditions
- 2- Willingness**
- 3- Supporting organizations

C- Preliminary findings

D- Conclusion



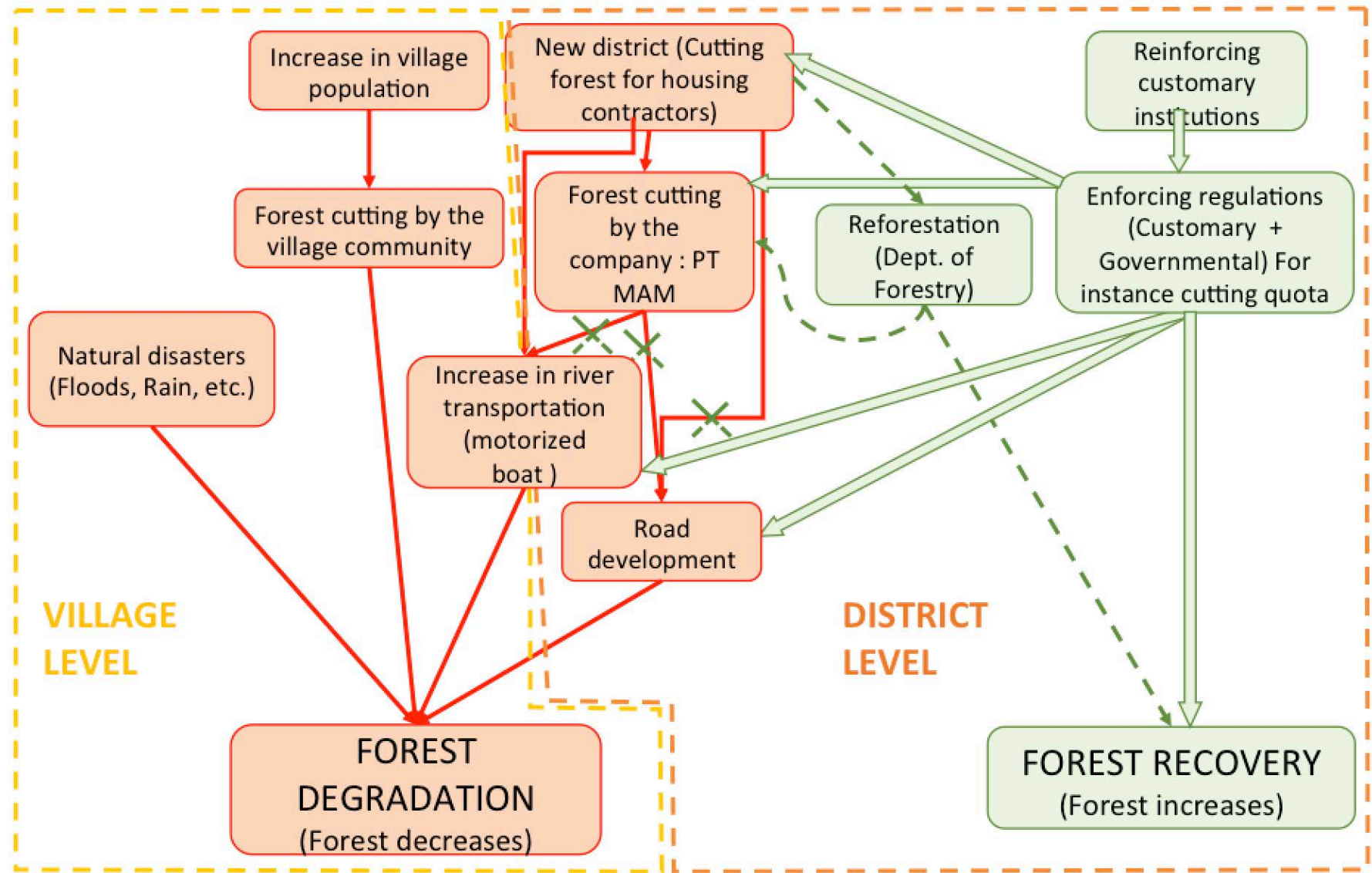
*Preparing land for ladang in West Kalimantan
M.Boissière , 2013*

Drivers of Change

- Understand the main causes of forest degradation perceived by local people.
- Trade-offs between conservation and livelihoods might influence willingness to participate in PMRV.



Drivers of Change



A- Introduction

- 1- Research Sites
- 2- Research Questions
- 3- Research Design and Methods

B- Methods and examples of data

- 1- Conditions
- 2- Willingness
- 3- Supporting Organizations**

C- Preliminary findings

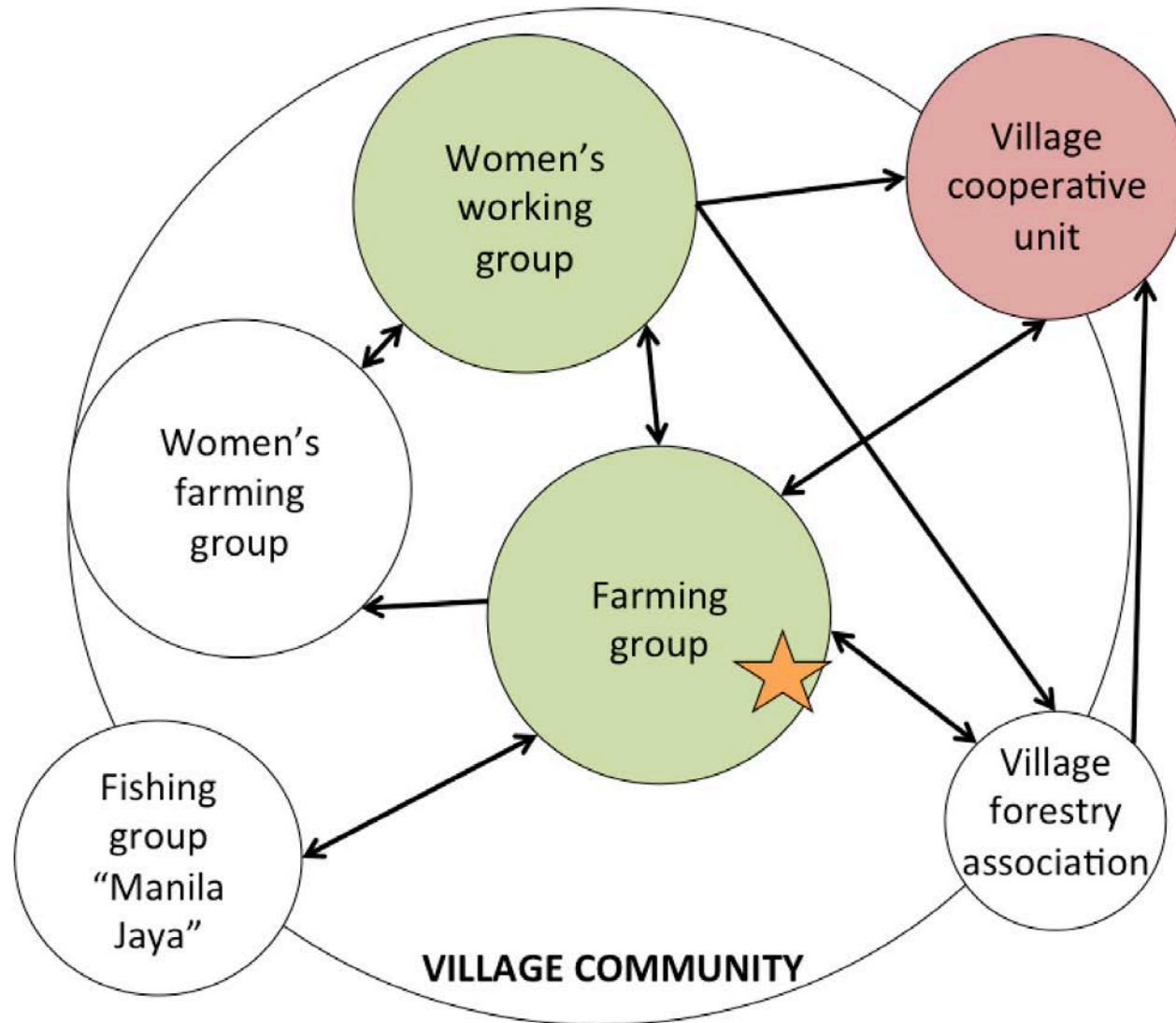
D- Conclusion

Sociogram

- Identify local organizations that focus on environmental activities, and their relationships with the community.
- Identify relevant village organizations to conduct and organize PMRV activities.
- Identify organizations that community members would prefer to work with.
- Look at how organizational relationships might help design sustainable community reporting systems.



Sociogram



Sociogram – Wonosobo – (Men group)



Synthesis of some preliminary findings

Sites	Jawa	Papua
RQs		
RQ1 - Conditions	<ul style="list-style-type: none"> - Time availability is around crop harvesting time and while waiting for paddy fields to be harvested. - Needs for supporting infrastructure to conduct PMRV. - People's dependence on natural resources can be a means to take measurements. 	<ul style="list-style-type: none"> - Between March and July villagers have more time available. - Technology and mobility constraints might be a challenge for reporting. - Dependence and proximity to forest might facilitate measurements.
RQ2 - Willingness	<ul style="list-style-type: none"> - People's consciousness and awareness for planting trees could be a support for PMRV. 	<ul style="list-style-type: none"> - Challenges to participation include lack of leadership, coordination and transparency.
RQ3- Supporting organizations	<ul style="list-style-type: none"> - Various organizations in the village could be options for facilitating measurements and reporting activities. 	<ul style="list-style-type: none"> - Need to find a consensus among the three main sources of power (<i>Customary/Religious /Political</i>). - Regular reporting from the local government to the sub-district and the district could be a way of reporting.

A- Introduction

- 1- Research Sites
- 2- Research Questions
- 3- Research Design and Methods

B- Methods and examples of data

- 1- Conditions
- 2- Willingness
- 3- Supporting Organizations

C- Preliminary findings

D-Conclusion

Conclusion

- The work on Java and Papua data coding, analysis, and synthesis is currently ongoing.
- The teams working in Kalimantan are going back to the field for a second round of fieldwork later in December 2013.
- By combining Governance, Social, and RS/GIS efforts, we hope this research can provide information on both site specific and cross-site capacities for a national PMRV system: accurate in measurements, efficient in communications, and grounded in community participation from local-to-national levels.

THANK YOU FOR YOUR ATTENTION



*Caption: Community Meeting In Bagusa
W. Depuy – Oct 2013*



Questions and Answers

A- Introduction

- 1- Research Sites
- 2- Research Questions
- 3- Research Design and Methods

B- Methods and examples of data

- 1- Conditions
- 2- Willingness
- 3- Supporting Organizations

C- Preliminary findings

D-Conclusion

The floor is yours.



Caption: Sunset on Mamberamo River – G.Beaudoin Aug. 2013

