



**Project: PRO-Formal**

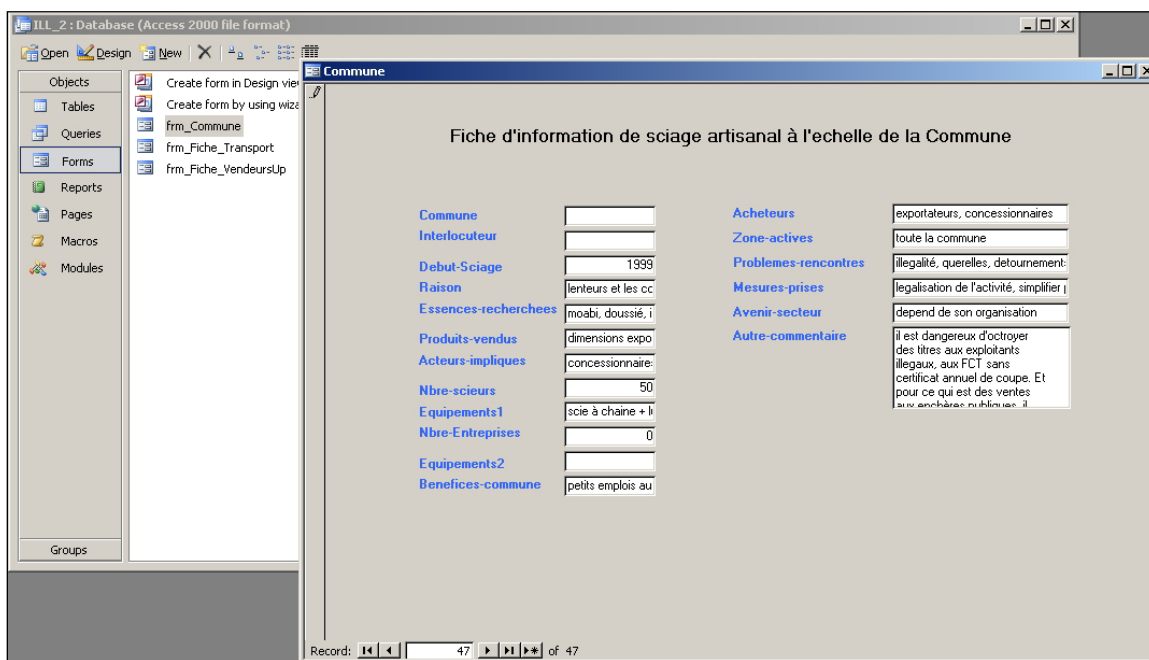
**Funder: EC**

**Object: Research Tools – Data Entry Tools**

Target: PRO-Formal webpage

Data collected in interviews on timber operations, in councils and in market depots are entered into a MS Access database through forms and then analysed either with MS Excel or statistical packages (SPSS, etc.).

An example of a standard form in MS Access (interviews with state and local officials).



An example of an MS Excel table exported from MS Access (data from timber depots in markets on timber sales).

	A	B	C	D	E	F	G	H	I	J	K	L	M	N	O	P
1	ID	Market	Day	Month	Year	Num_depot	Product	Length	Width	Height	Volume_piece (m3)	Sold	Sold_price	Tot_vol_sold (m3)	Species	Council_Market_Sawmill
2	-2146994211	bertoua_carrefour_batouri	18	9	2008		2 planche	2.2	0.40	0.04	0.035	5	700	0.176	Ayous / Obeche	Belabo
3	-2146734187	douala_saint_bruno	19	1	2009		5 latte	5.0	0.08	0.05	0.020	6	700	0.120	Naga	Makondo
4	-2146401827	douala_tractafric	9	2	2009		95 bastings	5.0	0.20	0.05	0.050	0		0.000	Moabi	Makondo
5	-2146348300	douala_ndokotti	4	4	2009		4 planche	4.0	0.30	0.04	0.048	8	1,000	0.384	Bahia	Edésa
6	-2145806569	yaounde_montee_parc	27	1	2009		4 bastings	5.0	0.15	0.03	0.023	0		0.000	Padouk rouge	Scierie
7	-2145313126	yaounde_montee_parc	20	1	2009		11 bastings	5.0	0.12	0.03	0.018	12	2,000	0.216	Moringui	Scierie
8	-2145071689	douala_cite_cicam	15	7	2008		1 latte	5.0	0.08	0.04	0.016	50	1,700	0.800	Dabéma	Matomb
9	-2143832903	douala_camp_yabassi	11	11	2008		4 planche	2.2	0.04	0.40	0.035	10	5,000	0.352	Béts	Scierie
10	-2143692729	yaounde_eleveur	5	3	2009		1 planche	2.2	0.40	0.04	0.035	150	3,500	5.280	Sapelli	Esse
11																
12																



An example of output from a statistical analysis package (test for annual timber sales).

```
The GLM Procedure
Student-Newman-Keuls Test for vent_an
NOTE: This test controls the Type I experimentwise error rate under the complete null hypothesis but not under partial null hypotheses.

Alpha                0.05
Error Degrees of Freedom 158
Error Mean Square     846575.1
Harmonic Mean of Cell Sizes 23.55435

NOTE: Cell sizes are not equal.

Number of Means      2      3
Critical Range       529.54096  634.36076

Means with the same letter are not significantly different.

SNK Grouping      Mean      N      ville
A                1442.4    89    Yaoundé
A                971.8    62    Douala
B                242.5    10    Bertoua
```