

450000

128°35'0"E

460000

128°40'0"E

470000

9650000

9650000

450000

128°35'0"E

460000

128°40'0"E

470000

Vegetation of Central Seram (Moluccas)



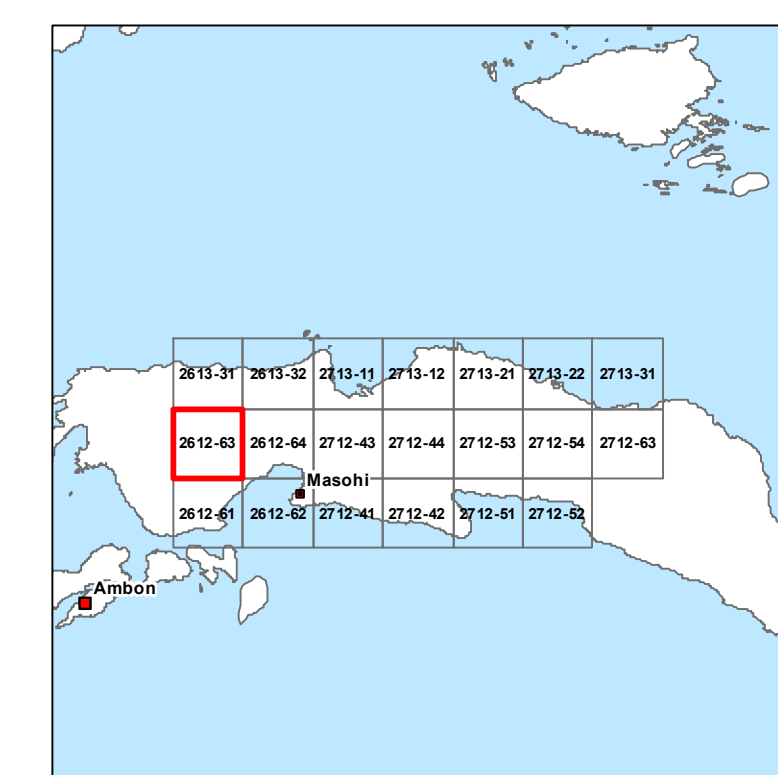
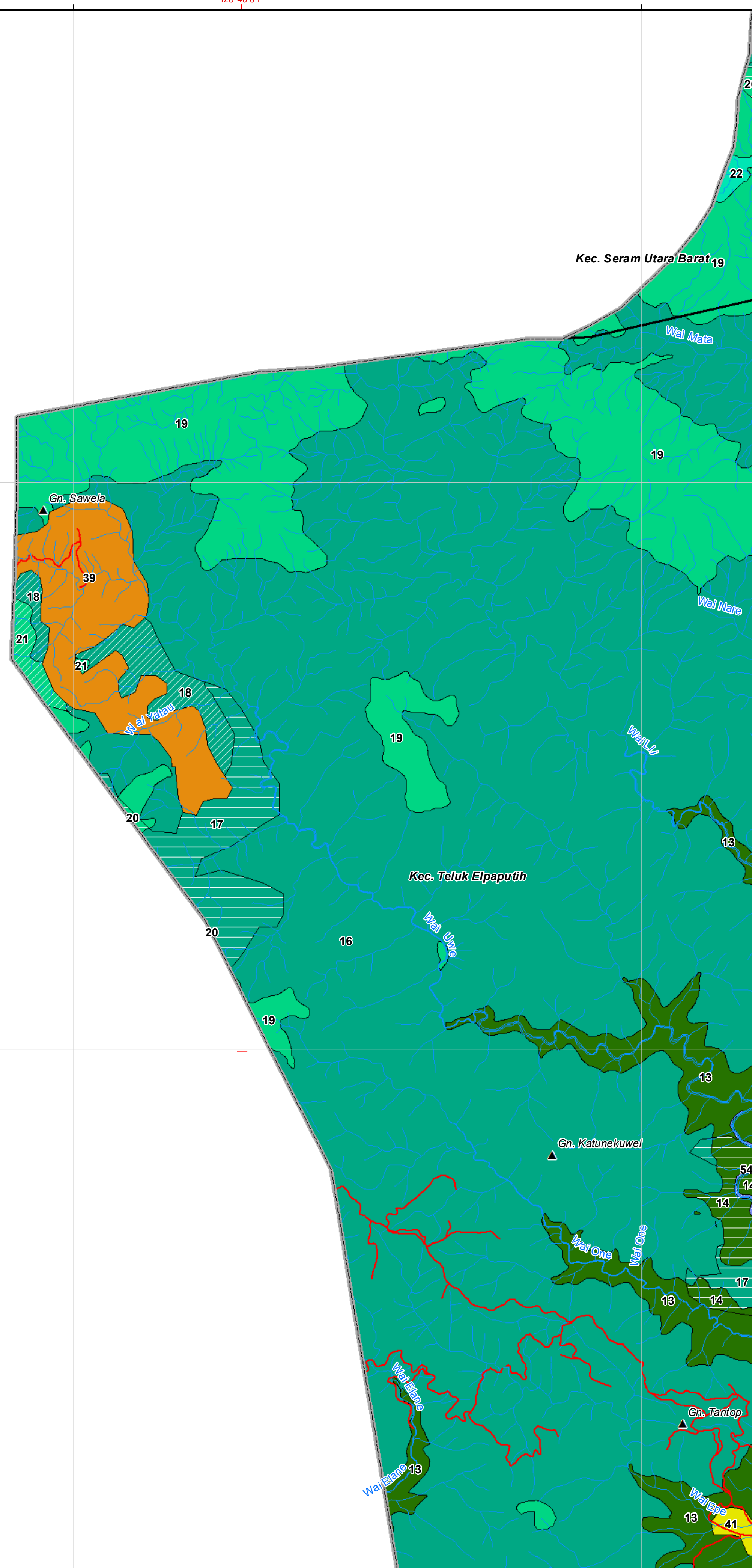
European Union

Sheet: 2612-63
Abio



Legend

- District capital
 - Sub-district capital
 - Village
 - Hamlet
 - ▲ Mountain / Hill
 - Regency boundary
 - Sub-district boundary
 - Manusela National Park
 - Collector Road
 - Other Road
 - Local Road
 - Footpath
 - River
- Vegetation class**
- 1, Mangrove
 - 2, Logged-over or depleted mangrove
 - 3, Back mangrove and nipa swamp
 - 4, Fresh water swamp forest
 - 5, Logged-over forest or depleted fresh water swamp forest
 - 6, Overlogged forest or very depleted fresh water swamp forest
 - 7, Periodically inundated swamp forest
 - 8, Riparian forest
 - 9, Swamp grassland or fermland
 - 10, Secondary regrowth swamp forest (Belukar rawa)
 - 11, Sago swamp
 - 12, Coastal (beach) forest
 - 13, Lowland forest (< 300 m)
 - 14, Logged over lowland forest_depleted
 - 15, Mosaic of secondary lowland forest types
 - 16, Hill forest (300 - 800 m)
 - 17, Logged over hill forest
 - 18, Mosaic of secondary hill forest types
 - 19, Submontane forest (800 - 1300 m)
 - 20, Submontane depleted forest
 - 21, Submontane very depleted forest
 - 22, Lower montane forest (1300 - 1800 m)
 - 23, Low lowland forest (< 300 m)
 - 24, Low hill forest (300 - 800 m)
 - 25, Low submontane forest (800 - 1300 m)
 - 26, Lowland Limestone forest (< 300 m)
 - 27, Logged over lowland limestone forest
 - 28, Hill Limestone forest (300 - 800 m)
 - 29, Logged over hill limestone forest_depleted
 - 30, Submontane Limestone forest (800 - 1300 m)
 - 31, Lower montane Limestone forest (1300 - 1800 m)
 - 32, Montane Limestone forest (1800 - 2300 m)
 - 33, Upper montane Limestone forest (2300 - 2800 m)
 - 34, Very low limestone vegetation at high elevation (mountain ridges and summits)
 - 35, Grassland (Natural)
 - 36, Grassland (Anthropic)
 - 37, Secondary regrowth shrub
 - 38, Secondary regrowth forest
 - 39, Savanna
 - 40, Teak plantation
 - 41, Mixed Garden
 - 42, Mosaic coconut and secondary vegetation
 - 43, Coconut estate (Coconut - cacao)
 - 44, Coconut plantation
 - 45, Cacao plantation
 - 46, Rubber estate
 - 47, Oil palm estate
 - 48, Food crop field (ladang)
 - 49, Irrigated paddy field
 - 50, Settlement
 - 51, Land newly cleared for oil palm estate
 - 52, Bareland
 - 53, Shrimp pond
 - 54, Dried river bed
 - 55, Water body

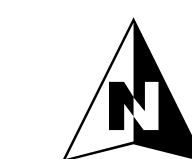


Map Projection Information:

Projection:
Universal Transverse Mercator (UTM) Zone 52 S

Distance unit:
Meter

Datum:
World Geodetic System 1984 (WGS 84)



Scale: 1:50000



Source:

1. Topographic map, Indonesia National Coordinator Agency for Survey and Mapping (Bakosurtanal), 1: 50,000 (2009)
2. National Park boundary from Forest Land Use map, Ministry of Forestry (SK No. 415/Kpts II/1999)
3. Vegetation classification produced from SPOT satellite imagery (2009/2010) and Landsat satellite imagery (2013)

Project supported by European Union implemented by CIRAD and partners

