

# Vegetation of Central Seram (Moluccas)



Sheet: 2713-22  
Samal

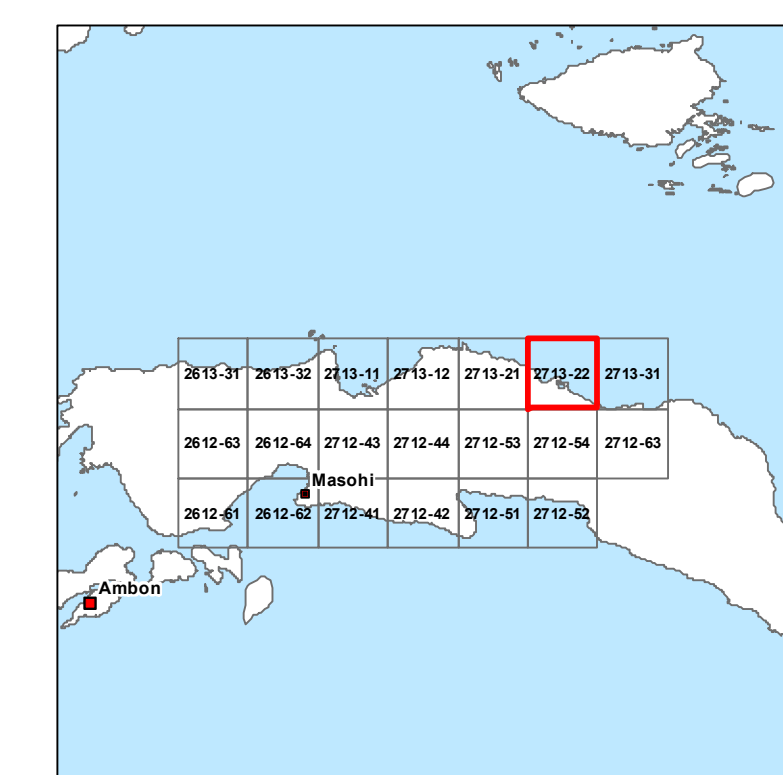
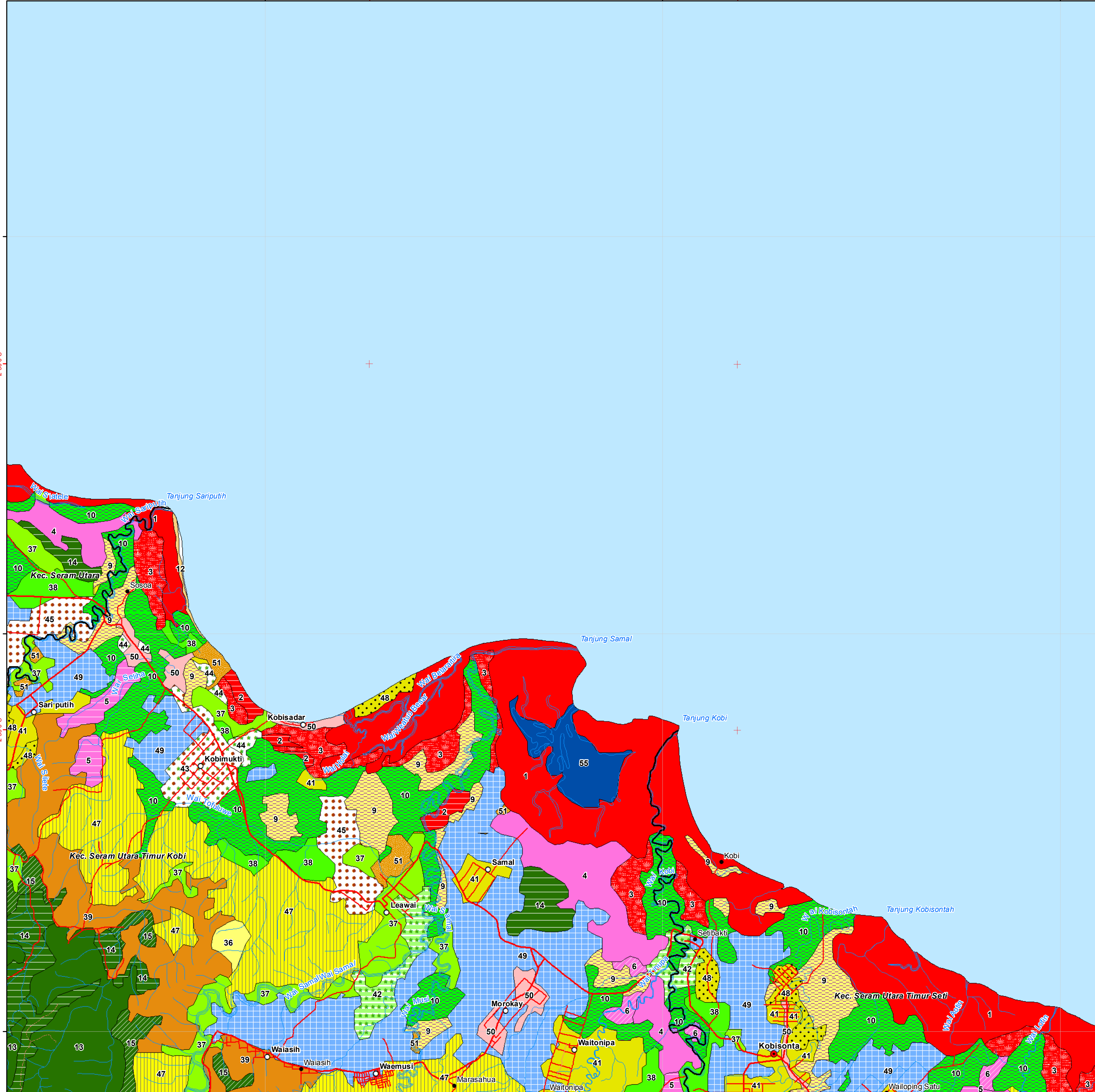


## Legend

- District capital
  - Sub-district capital
  - Village
  - Hamlet
  - ▲ Mountain / Hill
  - Regency boundary
  - Sub-district boundary
  - Manuseia National Park
  - Collector Road
  - Other Road
  - Local Road
  - Footpath
  - River
- Vegetation class**
- 1, Mangrove
  - 2, Logged-over or depleted mangrove
  - 3, Back mangrove and nipa swamp
  - 4, Fresh water swamp forest
  - 5, Logged-over forest or depleted fresh water swamp forest
  - 6, Overlogged forest or very depleted fresh water swamp forest
  - 7, Periodically inundated swamp forest
  - 8, Riparian forest
  - 9, Swamp grassland or fermland
  - 10, Secondary regrowth swamp forest (Belukar rawa)
  - 11, Sago swamp
  - 12, Coastal (beach) forest
  - 13, Lowland forest (< 300 m)
  - 14, Logged over lowland forest\_depleted
  - 15, Mosaic of secondary lowland forest types
  - 16, Hill forest (300 - 800 m)
  - 17, Logged over hill forest
  - 18, Mosaic of secondary hill forest types
  - 19, Submontane forest (800 - 1300 m)
  - 20, Submontane depleted forest
  - 21, Submontane very depleted forest
  - 22, Lower montane forest (1300 - 1800 m)
  - 23, Low lowland forest (< 300 m)
  - 24, Low hill forest (300 - 800 m)
  - 25, Low submontane forest (800 - 1300 m)
  - 26, Lowland Limestone forest (< 300 m)
  - 27, Logged over lowland limestone forest
  - 28, Hill Limestone forest (300 - 800 m)
  - 29, Logged over hill limestone forest\_depleted
  - 30, Submontane Limestone forest (800 - 1300 m)
  - 31, Lower montane Limestone forest (1300 - 1800 m)
  - 32, Montane Limestone forest (1800 - 2300 m)
  - 33, Upper montane Limestone forest (2300 - 2800 m)
  - 34, Very low limestone vegetation at high elevation (mountain ridges and summits)
  - 35, Grassland (Natural)
  - 36, Grassland (Anthropic)
  - 37, Secondary regrowth shrub
  - 38, Secondary regrowth forest
  - 39, Savanna
  - 40, Teak plantation
  - 41, Mixed Garden
  - 42, Mosaic coconut and secondary vegetation
  - 43, Coconut estate (Coconut - cacao)
  - 44, Coconut plantation
  - 45, Cacao plantation
  - 46, Rubber estate
  - 47, Oil palm estate
  - 48, Food crop field (ladang)
  - 49, Irrigated paddy field
  - 50, Settlement
  - 51, Land newly cleared for oil palm estate
  - 52, Bareland
  - 53, Shrimp pond
  - 54, Dried river bed
  - 55, Water body

9690000  
9680000  
9670000

129°50'0"E  
129°55'0"E

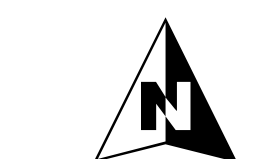


**Map Projection Information:**

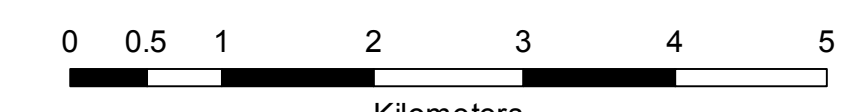
**Projection:** Universal Transverse Mercator (UTM) Zone 52 S

**Distance unit:** Meter

**Datum:** World Geodetic System 1984 (WGS 84)



Scale: 1:50000



Source:

1. Topographic map, Indonesia National Coordinator Agency for Survey and Mapping (Bakosurtanal), 1: 50,000 (2009)
2. National Park boundary from Forest Land Use map. Ministry of Forestry (SK No. 415/Kpts II/1999)
3. Vegetation classification produced from SPOT satellite imagery (2009/2010) and Landsat satellite imagery (2013)

Project supported by European Union implemented by CIRAD and partners

