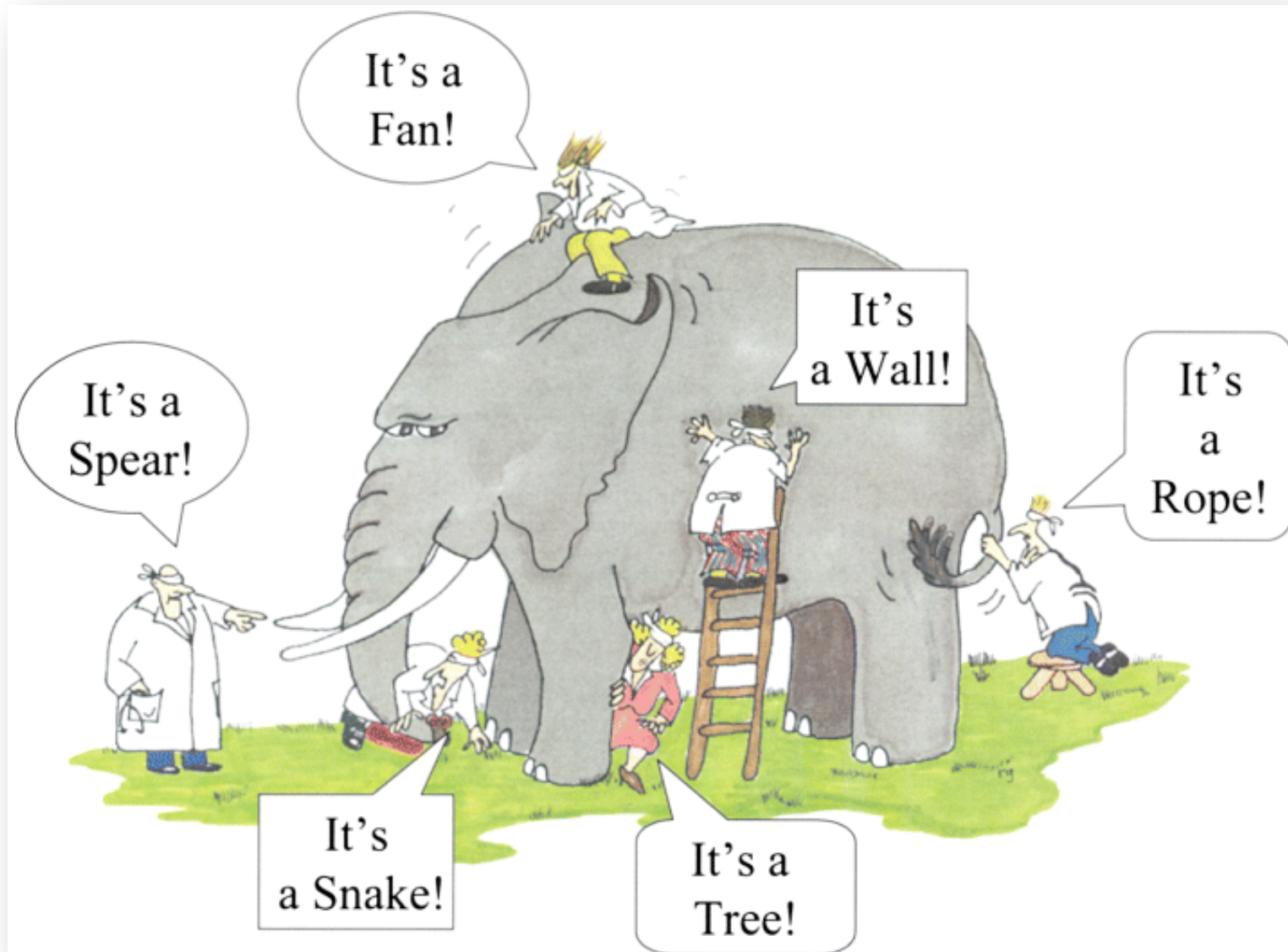




Formal rules, informal timber extraction, Central Africa and China

The map is not the territory



The W.E.I.R.D. effect

BEHAVIORAL AND BRAIN SCIENCES (2010) 33, 61–135
doi:10.1017/S0140525X0999152X

The weirdest people in the world?

The real resource sink is the US, Europe, and Japan (White et al. 2006)

China gives fewer lectures and more practical help (in Africa) (Jeffrey Sachs in NYT, 8/18/06)

China's involvement in Africa lacks perspective in broadsheet press (Mawdsley 2008)

China ... imports timber and exports ecological impact (Mayer et al. 2005)

China's timber practices abroad are a threat to sustainability and human livelihoods (Sun et al. 2004; Smouts 2003)

There is a culture of secrecy around Chinese companies and their prospecting activities (Smouts 2003; Glastra 1999)

Ara Norenzayan

Department of Psychology, University of British Columbia, Vancouver V6T 1Z4, Canada
ara@psych.ubc.ca

<http://www.foreignpolicy.com>

Central Africa: the map



- Forest management units
- Council forests
- Community forests
- Authorisations
- Customary permits

Area/Volume harvested
Investments
People employed

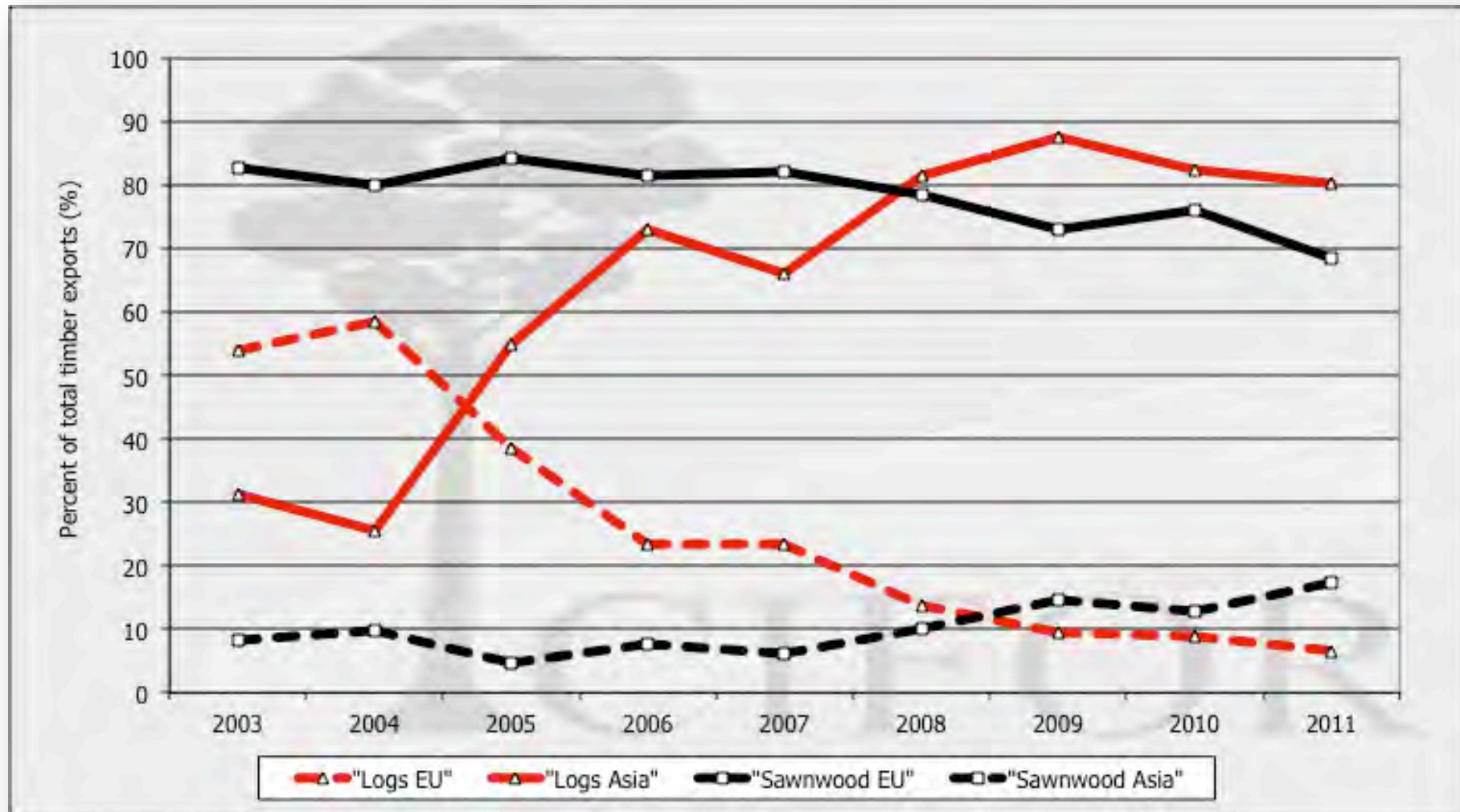
...

Central Africa: the territory

Outcomes	Effective formal institutions	Ineffective formal institutions
Convergent	Complementary	Substitutive
Divergent	Accommodating	Competing

Helmke and Levitsky 2004

Our findings: the map



Timber exports to Asia (90% China) over total exports

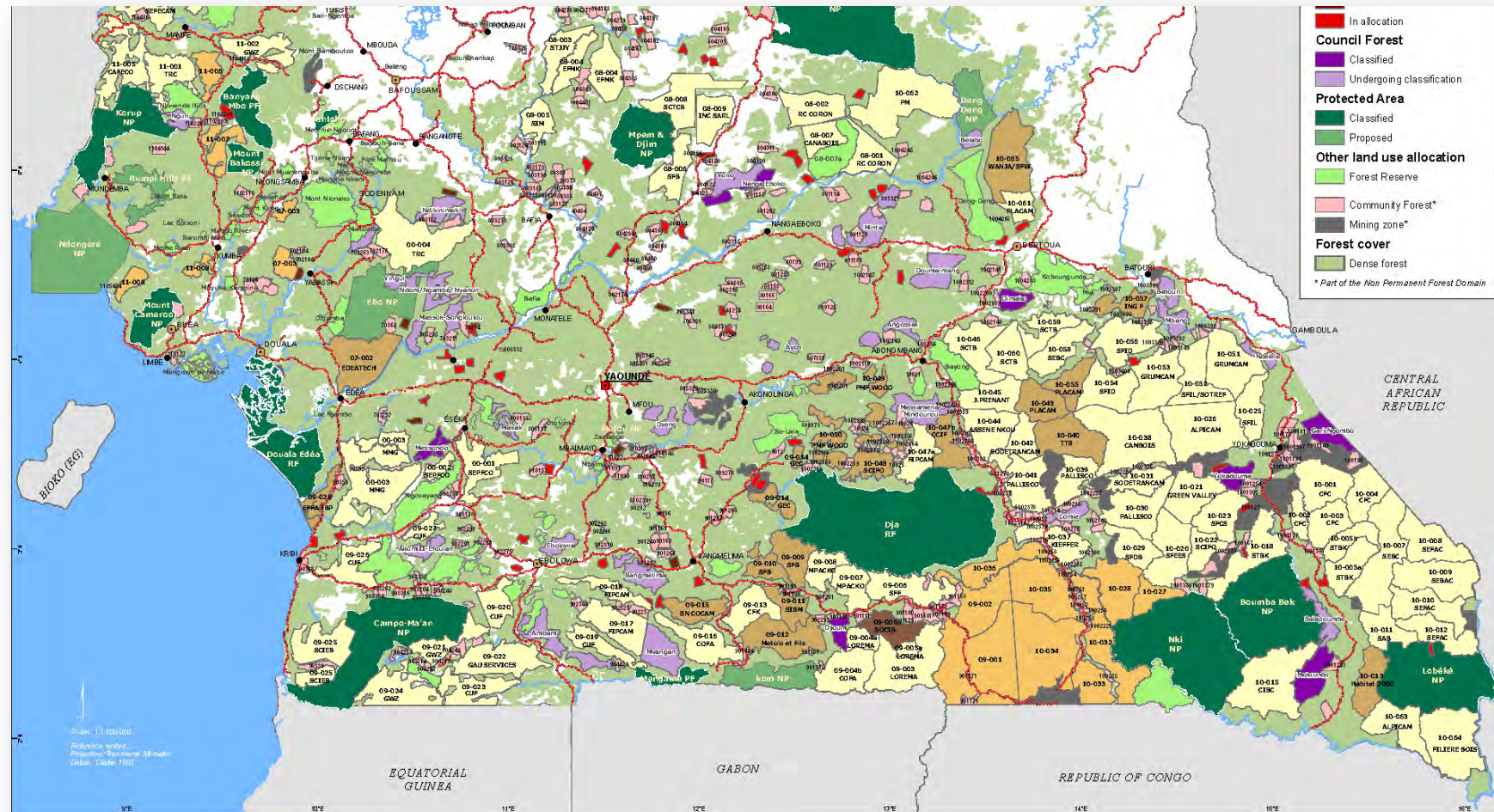
Our findings: the territory

TABLE 3 *Engagements of logging companies with local population (cahier des charges)*

	Company 1	Company 2	Company 3
Infrastructure	Company financed the renovation of a public hospital in one Council where they operate		Company is financing the construction of a rural market in one village and purchased roofing materials for homes
Training	<i>Cahier des charges</i> commits to improving agricultural skills of rural citizens; has organized agro-pastoral trainings for affected villages		
Cash		Company representatives claim to pay an undisclosed amount of money to the villages, reportedly to fulfil the management specifications negotiated with affected villages	
Local employment			Company reportedly gives preferential treatment to affected communities during recruitment
In kind			Distribution of wood residues to local families at no charge for use as fuel

Cerutti *et al.* 2011

Timber: the map

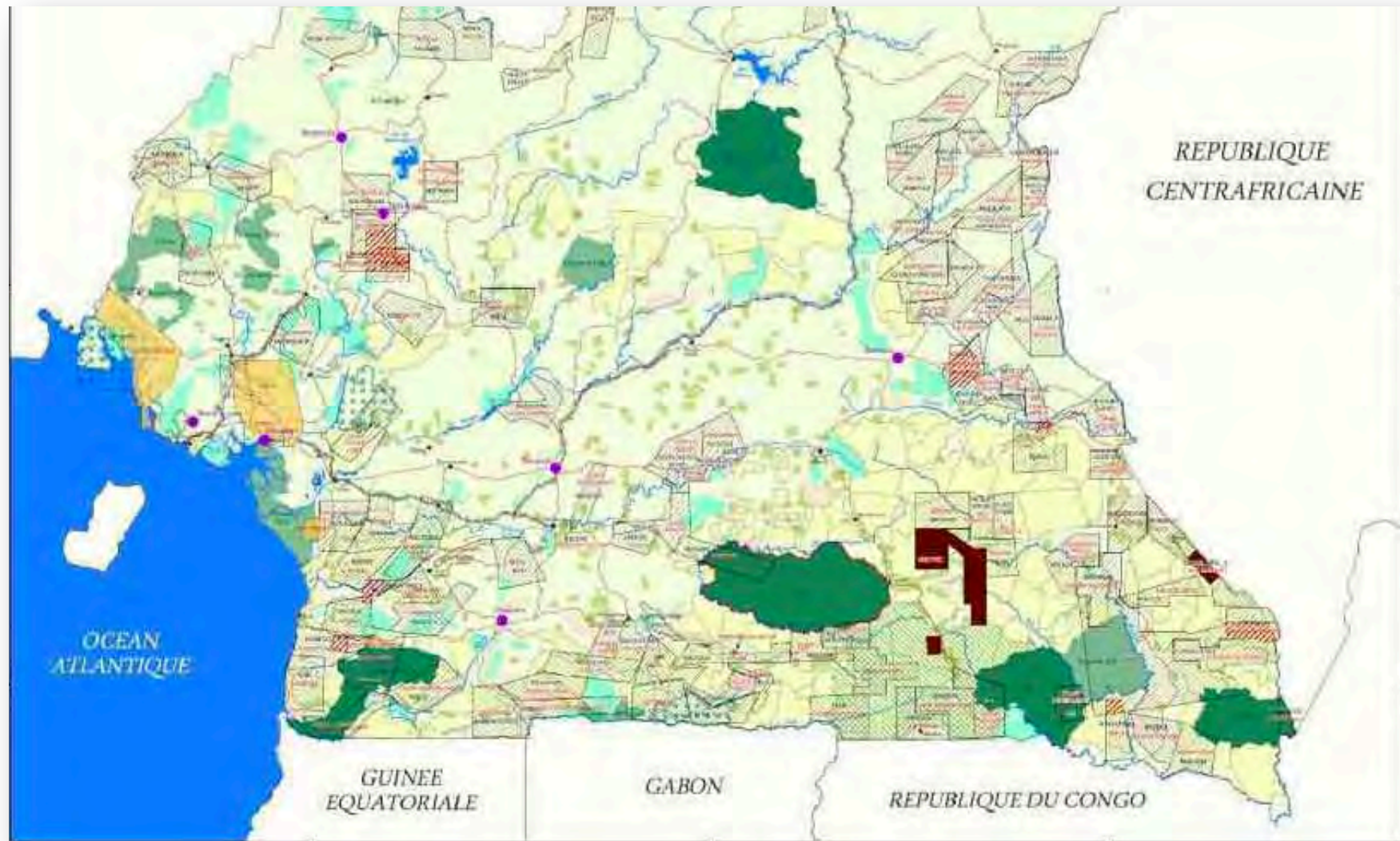


<http://www.wri.org>

THINKING beyond the canopy

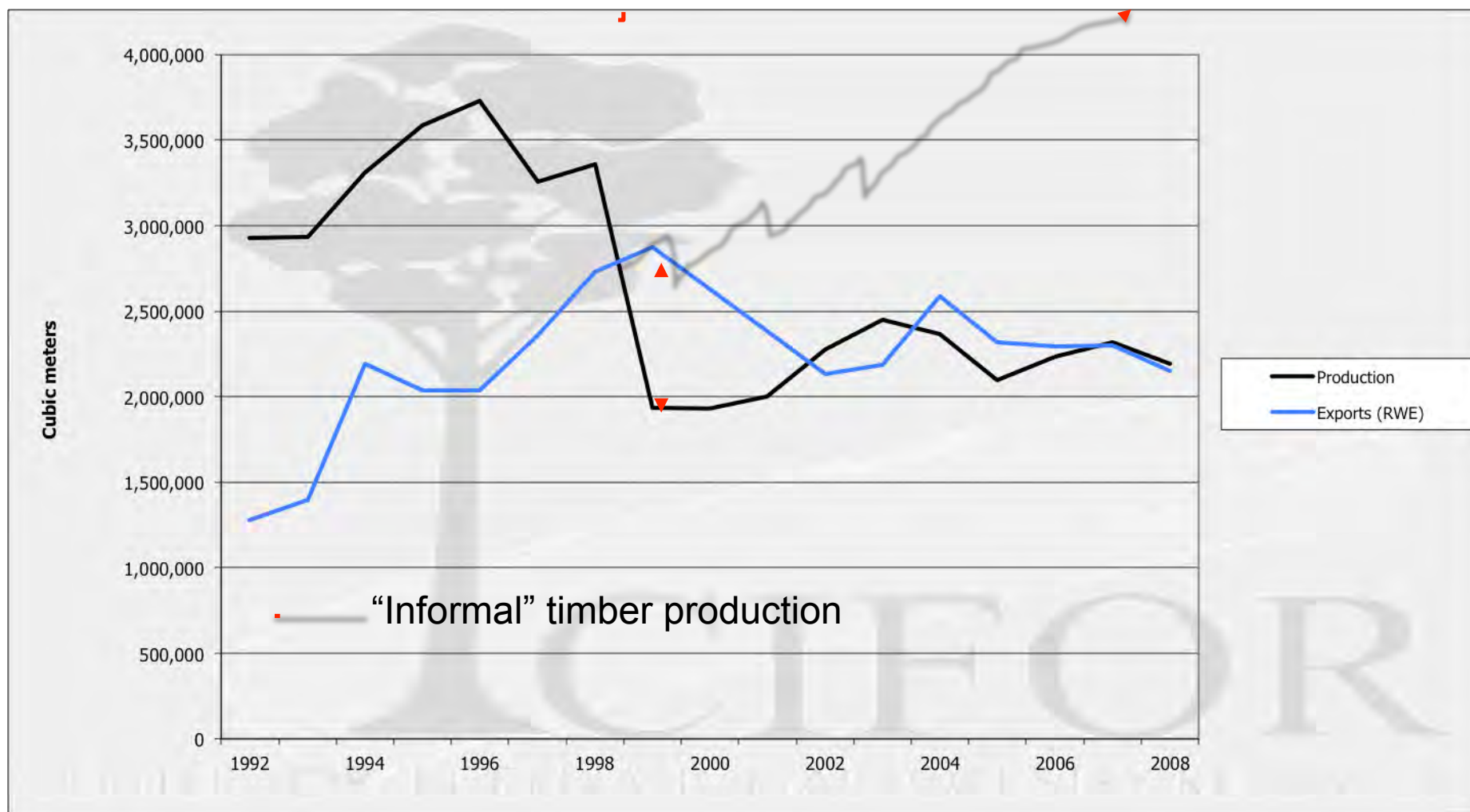


Timber: the territory



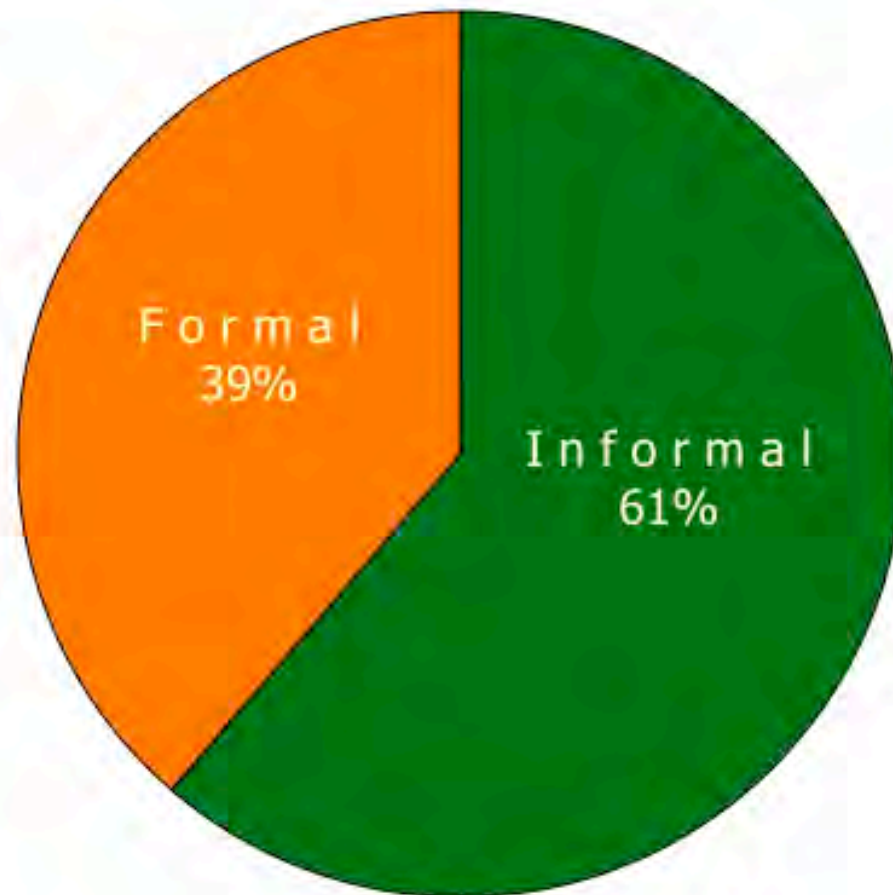
WWF-CED-RELUFA 2012

Timber production: the map



Cerutti and Tacconi 2008

Timber production: the territory



[Percent of national sawnwood production, m³]

Source: State of the Forest 2010, chapter 4 (www.observatoire-comifac.net)

Harvesting...



THINKING beyond the canopy





Processing...



Carrying...



THINKING beyond the canopy



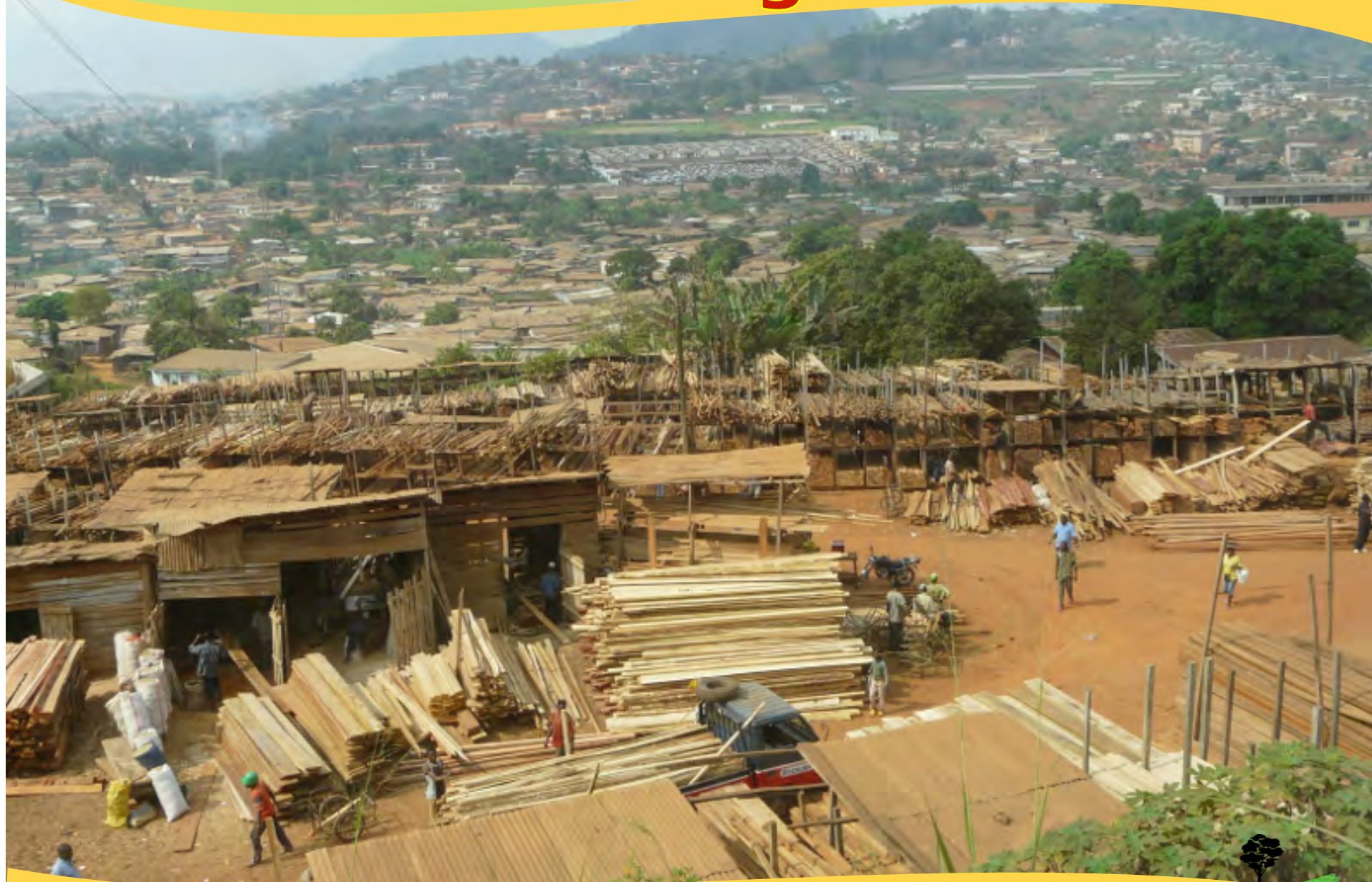
Transport...



THINKING beyond the canopy



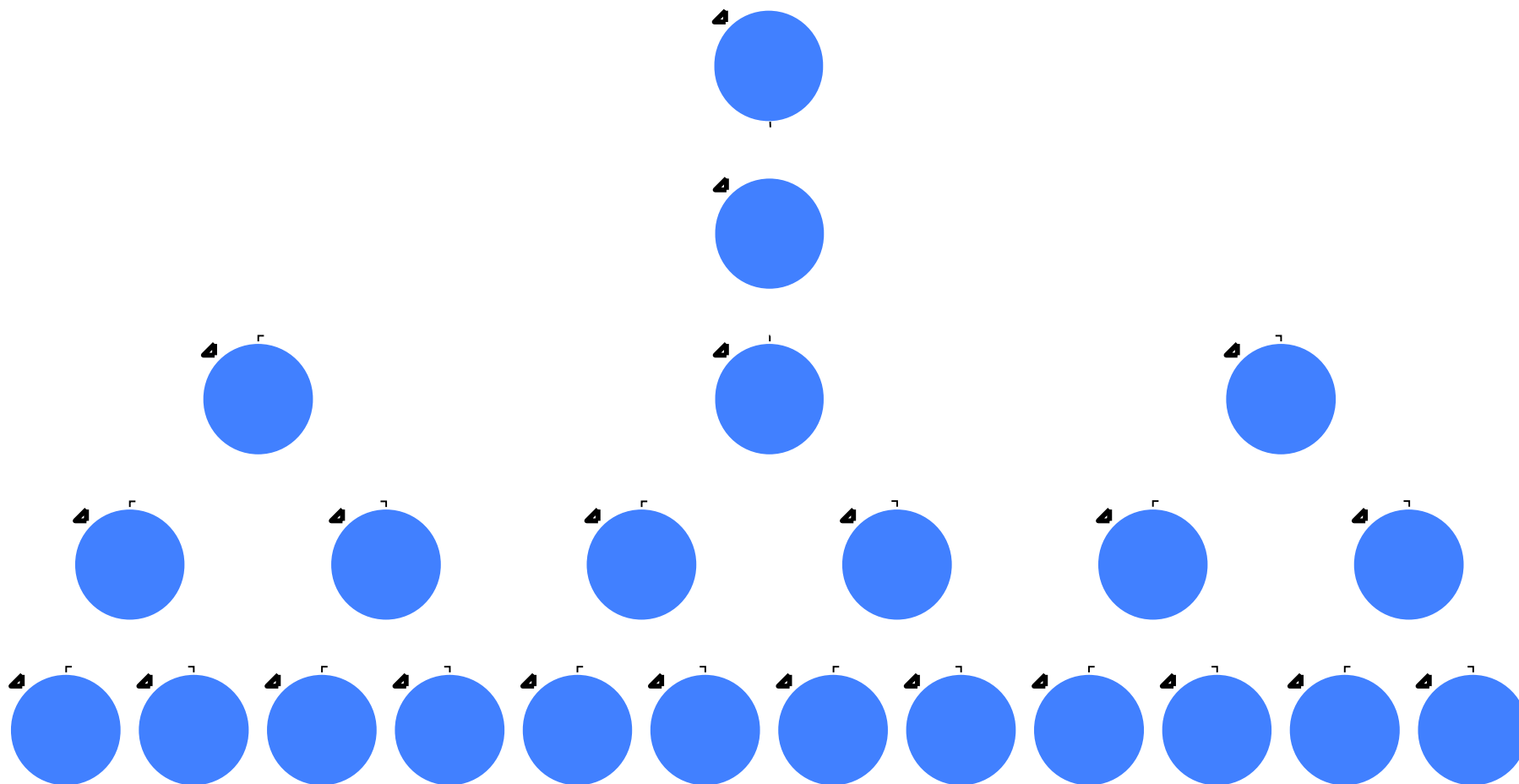
Selling...



THINKING beyond the canopy



The State: the map



The State: the territory

Society and Natural Resources, 0:1–15
Copyright © 2012 Taylor & Francis Group, LLC
ISSN: 0894-1920 print/1521-0723 online
DOI: 10.1080/08941920.2012.714846

 **Routledge**
Taylor & Francis Group

Cameroon's Hidden Harvest: Commercial Chainsaw Logging, Corruption, and Livelihoods

PAOLO OMAR CERUTTI

Center for International Forestry Research, Yaoundé, Cameroon, and
Crawford School of Economics and Government, The Australian
National University, Canberra, Australia

LUCA TACCONI

Crawford School of Economics and Government, The Australian
National University, Canberra, Australia

GUILLAUME LESCUYER

Center for International Forestry Research, Yaoundé, Cameroon, and
Centre de coopération Internationale en Recherche Agronomique pour le
Développement, Montpellier, France

ROBERT NASI

Center for International Forestry Research, Bogor, Indonesia

THINKING beyond the canopy



Recent trends: map or territory?

L 92/4

EN

Official Journal of the European Union

6.4.2011

VOLUNTARY PARTNERSHIP AGREEMENT

between the European Union and the Republic of Cameroon on forest law enforcement, governance and trade in timber and derived products to the European Union (FLEGT)

THE EUROPEAN UNION, hereinafter referred to as the 'Union'

of the one part,

AND THE REPUBLIC OF CAMEROON, hereinafter referred to as 'Cameroon'

of the other part,

hereinafter referred to together as the 'Parties',

What about China in all this?

- There exist “things” that make China different from other countries
 - But “who” is China?
- “Old” players have shaped the territory, “new” players challenge “model” behavioural norms (often wrongly) taken for granted
- Before changing the “rules of the game”, new players need to learn current rules
 - “Fill the gaps” = easiest initial strategy?



Grazie

www.cifor.org/pro-formal
p.cerutti@cgiar.org



The Center for International Forestry Research (CIFOR) is one of the 15 centres supported by the Consultative Group on International Agricultural Research (CGIAR)

THINKING beyond the canopy

