

Mekong Sentinel Landscape



Coordinated by:
Rhett Harrison (ICRAF), Aaron J.M. Russell (CIFOR)



Yunnan Province (Xishuangbanna prefecture)

Laos (Luang Namtha, Oudomxay provinces),

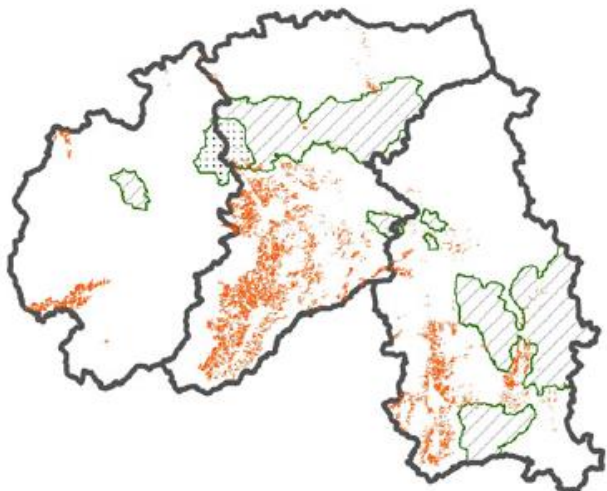
Thailand (Chiang Rai province)

Myanmar (Shan State)

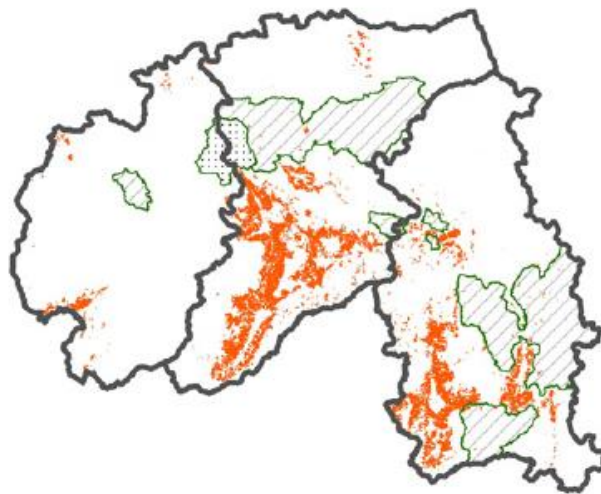
- Evergreen and semi-deciduous rainforest ecotypes
- high species richness
- high ethnic diversity
- Economic integration: forest resource extraction and capital driving land use change from China

Rubber expansion in XSBN

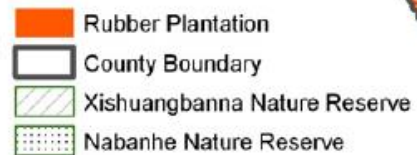
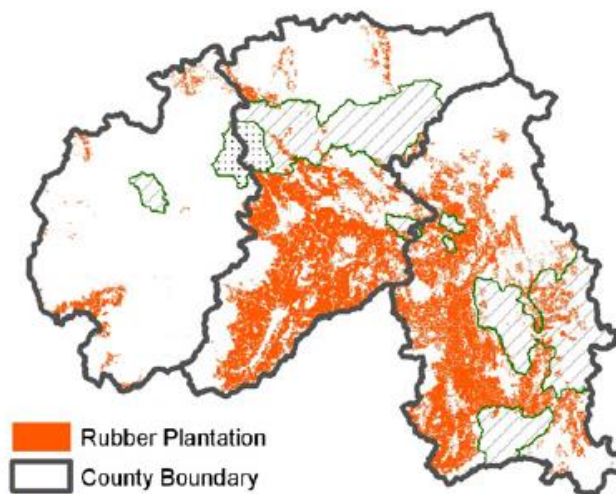
1992



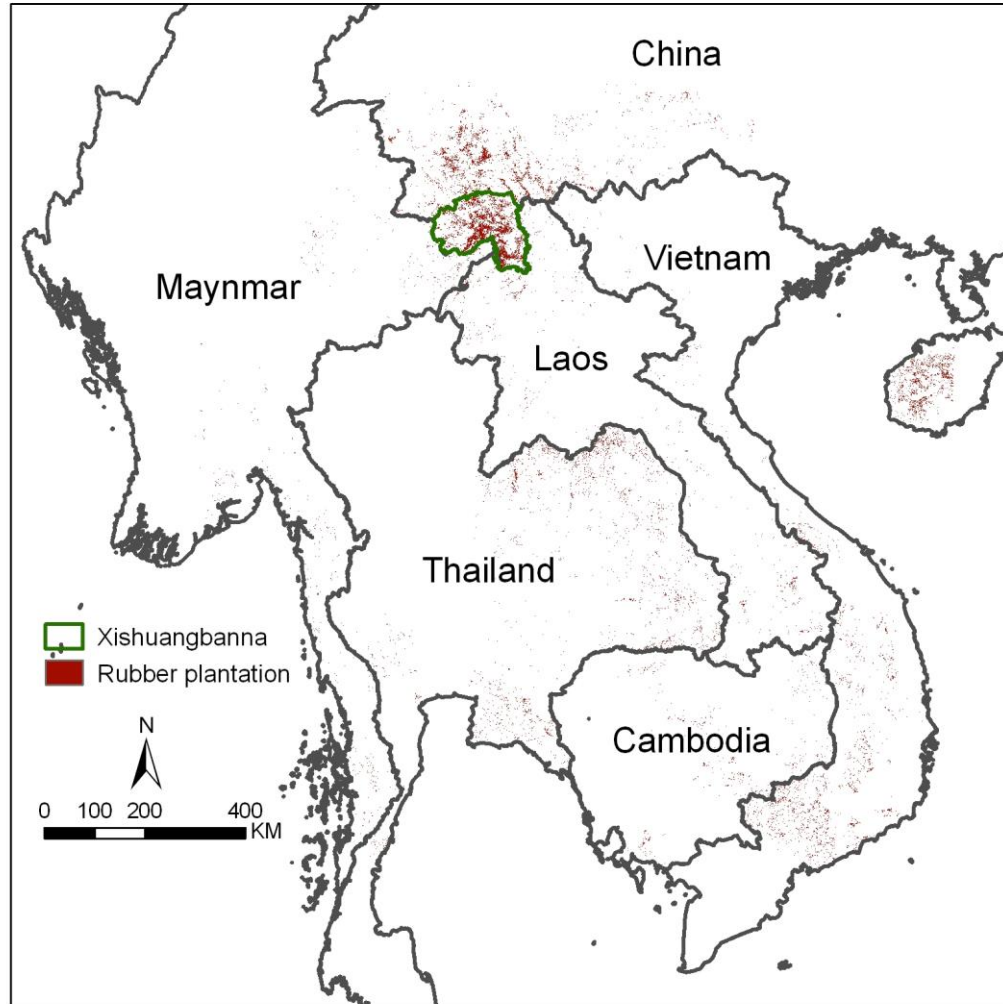
2002



2010



Rubber in the region



Problem

tion of formerly multiuse landscapes has l

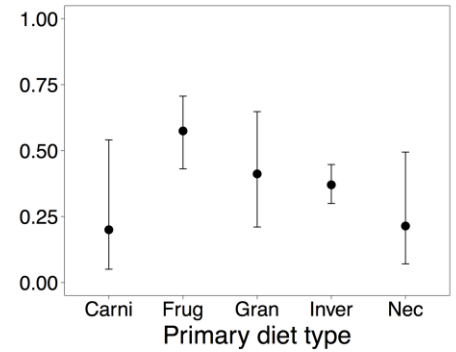
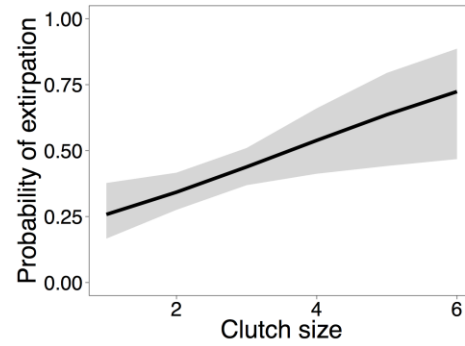
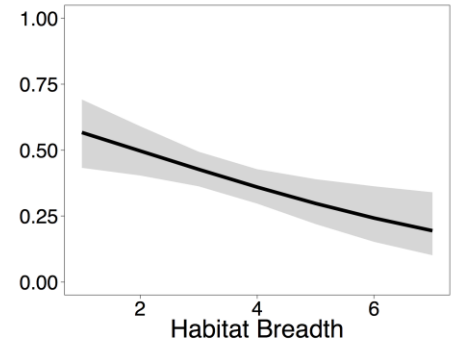
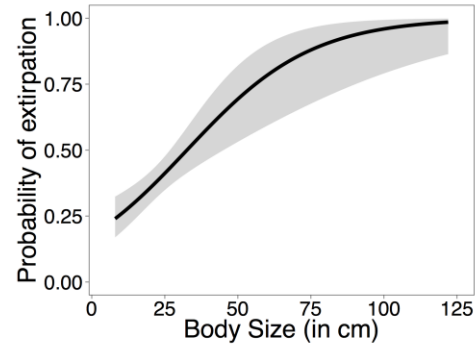
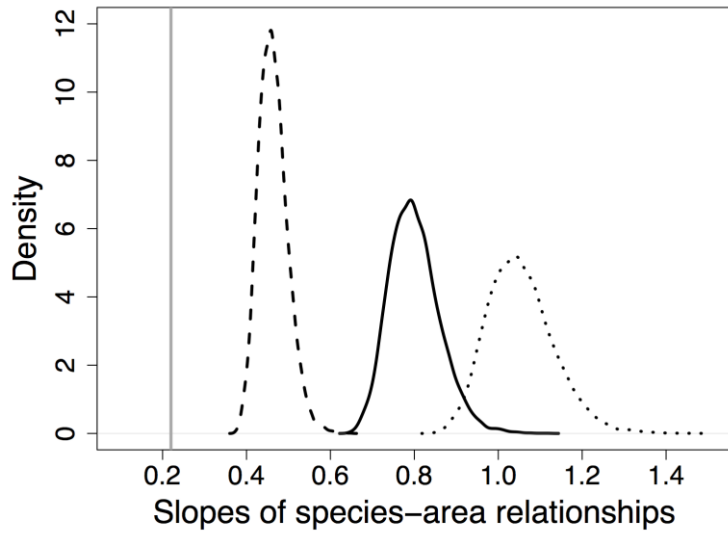
have benefited little from rubber income,



Environmental impacts

- Increased water-use, especially in dry season
- Reduced soil fertility and nutrient cycling
- Increased soil erosion
- Increased GHG emissions
- Reduced value of landscape for conservation
- Local climate effects → prolonged dry season

Important landscape for conservation



Mekong SL Partners

Core Mekong SL Partners:

ICRAF (lead), CIFOR, National University of Laos, Kunming Institute of Botany, Mae FaeLueng University Thailand

Possible partner synergies:

IWMI, CIAT, UNEP, Stockholm Environment Institute, Chiang Mai University, Khon Kaen University, National Forestry and Agriculture Research Institute (Laos), Centre for Environment and Development (CDE, Swiss),

CGIAR Co-locating scientists

- ICRAF: *Rhett Harrison, Jianchu Xu, Zhuangfang Yi, Huafang Chen, Dietrich Schmidt-Vogt; Delia Catacutan, Anne Tergeggen, Haiying Yu, Xing Mai, Peter Mortimer, Sailesh Ranjitkar*
- CIFOR: *Aaron J.M. Russell, Grace Wong, Krystof Obidzinski, Mrigesh Kshatriya, Mike Dwyer, Moira Moeliono, Maarit Kallio, Rob Cole; Thu Thuy Pham; Carol Colfer, Christine Padoch, Louis Putzel, Terry Sunderland, William Sunderlin, Nick Hogarth.*
- Bioversity: *Riina Jalonen*

Mekong partnership development

May 2012 - Proposal dev: CIFOR and ICRAF-Kunming

Nov. 2012 – stakeholder workshops (Vientiane and Kunming)

- CGIAR centers
- Lao research institutions
- Lao/Mekong development and conservation institutions
- Chinese research institutions

May 2013 – Key Mekong partner meeting

- Key Mekong SL partners (CIFOR, ICRAF, CIAT, RECOFTC, NUoL, Yunnan Institute of Environment, XTBG)

Feb 2014 – NUoL MOU coordination meeting

- MOU signed with NUoL;
- Lao project coordination and synergies meeting

CRP6 Project Synergies

	Project Name	Project Lead	Method synergies	Co-location of site/province
1	Mekong Sentinel Landscape # *	R. Harrison (ICRAF)* Aaron Russell		Sites in Oudomxay and Luang Namtha (Lao), Xishuangbanna (China)
2	Green Rubber	R Harrison	HH survey	Co-location with sites all sites
3	Tradeoffs in REDD+	K. Obidzinski	HH survey (part)	Additional sites in Oudomxay and Luang Namtha (Lao)
4	Risk and incentives for conservation	G. Wong	HH survey (part)	Additional sites in Huapan, Xienkouang, Luang Prabang (Lao)
5	ASFCC	M. Brockhaus, G. Wong	HH survey (part)	Additional sites in Huapan and Xienkouang (Lao)
6	RECOFTC- Bokeo	E. Etue (RECOFTC)	IFRI	Additional sites in Bokeo (Lao)