

Mekong Sentinel Landscape



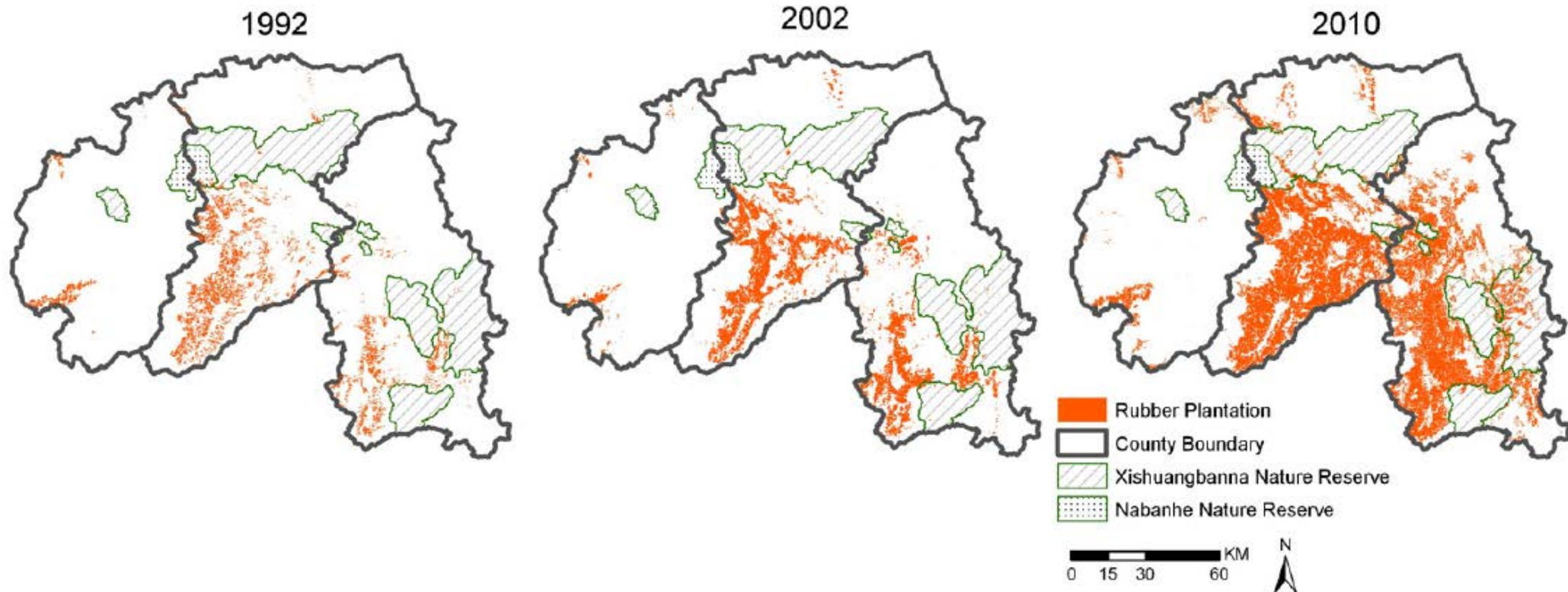
Rhett D. Harrison: ICRAF China
Aaron Russel: CIFOR Indonesia

Boundary of Menkong SL



Principle land-use change

Xishuangbanna: Rapid conversion of lowland rainforest / shifting cultivation to monoculture rubber



Principle land-use change



Rubber is rapidly developing in other areas

Principle land-use change



Recent rapid clearance of upland forest for bananas

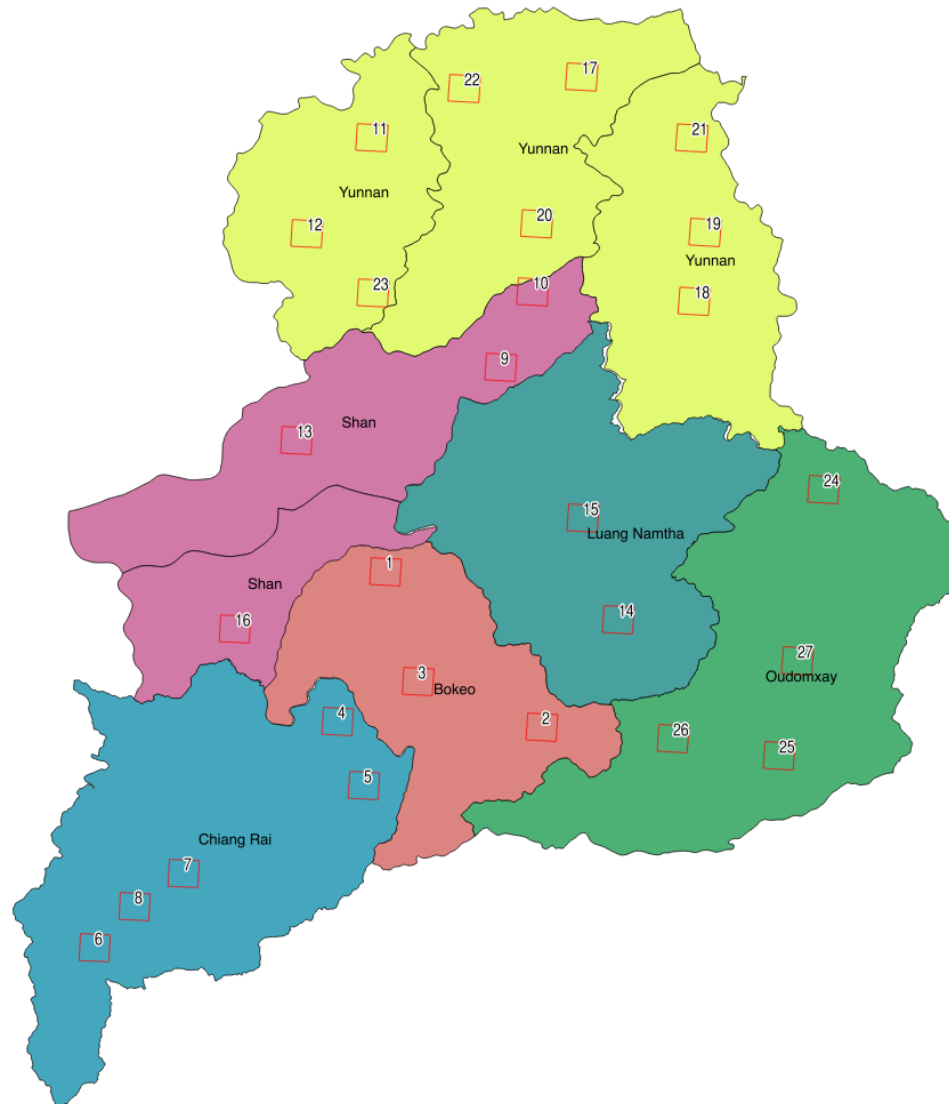
Problem

Reduction of forest cover and simplification of formerly multiuse landscapes has led to an erosion of ecosystem services

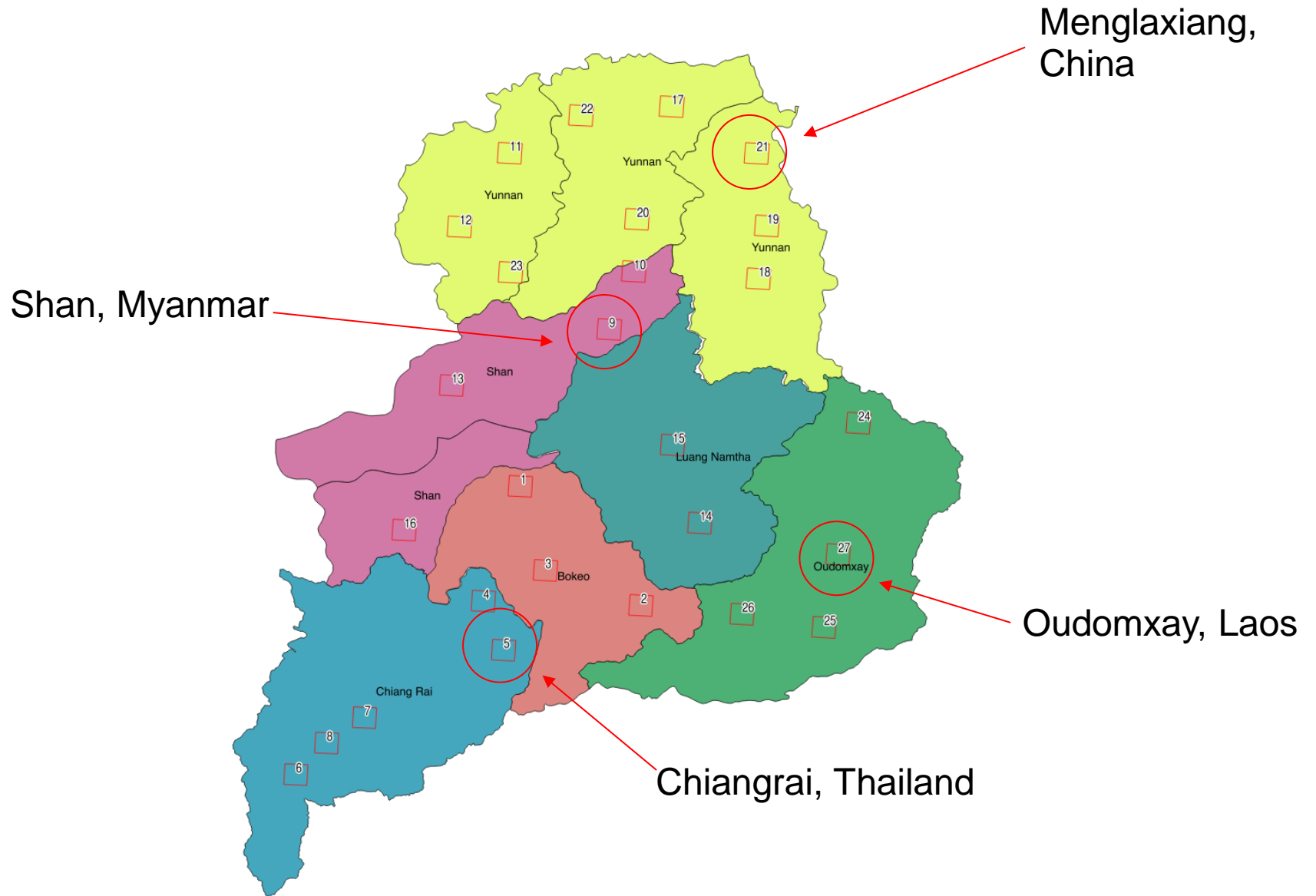
Externalities are often borne by segments of society who have benefited little from rubber income, causing increased disparities in wealth and social unrest



Site selection



Site selection



Menglanxiang



Rubber entered site about 15 yrs ago, also paddy rice and tea;
~40% natural forest mostly in protected areas

Menglanxiang

Dai village



Tea



Small wood lots



Garden vegetables



Oudomxay



Rubber in small lowland patches, hill paddy, fruit orchards;
~60% natural forest mostly in uplands

Chiangrai



Rubber new in site but now a major landuse;
~60% natural forest including protected area



Progress by Aug 2014

MOUs signed with country partners in China, Laos, and Thailand

Site visits to 20 potential sites conducted by ICRAF – June 2014

Site visit to Oudomxay, Laos by Socio-ecolonimc team – July 2014

LDSF survey in Menglaxiang commenced, July 2014 (ongoing)